

THORN

Product Focus | Spring 2015



Key Launches

Indoor

- 1 **Chalice**
- 2 **Chalice Pro**
- 3 **Omega Pro**

Outdoor

- 4 **FleXity**
- 5 **Urba**
- 6 **Zoar**

Launches

Indoor

- 7 **Chalk**
- 8 **Contour**
- 9 **ForceLED**
- 10 **Jupiter 3**
- 11 **Omega LED**
- 12 **PopPack LED**
- 13 **Primata Pro**
- 14 **Primata (LED/T5)**
- 15 **Voyager Compact LED**
- 16 **Sensalite**

Outdoor

- 17 **Satin 2 Recessed**
- 18 **Sunnapak**
- 19 **Urbastil**
- 20 **Vioo**

Upgrades

Indoor

- 21 **Club LED**
- 22 **HiPak Pro LED**
- 23 **Leopard LED**
- 24 **Pallion LED**
- 25 **Tidon LED**

Outdoor

- 26 **GTLED RS**
- 27 **Jalon LED**
- 28 **Promenade LED**



Chalice

A high performance LED downlight offering a direct replacement for conventional CFL downlights up to 1/26W and 2/26W.

Fitted with highly efficient dimmable LEDs (100lm/W) and featuring a 200mm cut out diameter, Chalice is ideal for retrofits and offers energy savings of up to 70% compared to CFL downlights. Chalice can substantially reduce both energy consumption and maintenance requirements for a wide range of applications including office and education, general lighting, residential, as well as hotel and wellness. A choice of light outputs, including 1000, 2000, and 3000 lumens, and colour temperatures (3000K and 4000K) meets all lighting requirements. Chalice comes with a remote driver to make installation and maintenance quick and easy. IP44 rated, it has a colour rendering index of 80, a wide beam and a unified glare ratio of <22. Chalice is supplied emergency ready.

www.thornlighting.com/CHLC







2

Chalice Pro



An advanced LED downlight offering superior performance in all areas.

Main features include exceptional efficacy (110lm/W), a colour rendering index above 90, and a state of the art thermal design with a specifically designed LED module to run at a cool temperature and provide a long 50 000-hour lifetime. With an overall height of less than 100mm, Chalice Pro is ideal for low ceiling voids. It offers excellent light quality with a uniform lit appearance. Chalice Pro has a 150mm cut out diameter and is available with a range of reflector finishes (satinbrite and mirrorbrite) as well as decorative or wall washer attachments. A choice of dimmable light outputs, including 1100, 2000, and 3000 lumens, and colour temperatures (3000K and 4000K) meets all lighting requirements. Chalice has a wide beam and a unified glare ratio of <math><22</math> as standard and <math><19</math> with attachments. Chalice is supplied emergency ready and IP44 rated.

www.thornlighting.com/CHLP

3

Omega Pro



A striking edge lit flat panel range with outstanding glare control to offer comfort and style for office and education lighting – creating a better work/light balance.

Omega Pro is fitted with a Glare ProTech prismatic optic. As a result the luminaire delivers class leading performance to reduce screen glare and exceeds the requirements of EN12464, offering great visual comfort combined with high efficiency. In addition, due to the optic and the light distribution it is possible to install 25% less luminaires in large office spaces, compared to fluorescent equivalents. Finally, the high performance and low maintenance LED reduce energy consumption by up to 55%. Just 12 mm thick, Omega Pro's edge lit panels provide smooth, sleek and slim line styling with a bright and ultra-modern aesthetic. Omega Pro is a versatile edge lit solution available in various sizes, dimming and integrated emergency options. It is an extension to Thorn's existing Omega range.

www.thornlighting.com/OMPL



FleXity



A modern and discreet urban LED lantern offering high performance for a fast return on investment.

Versatile and efficient, FleXity is the first decorative post top lantern in Thorn's range to respond to this wide range of cityscape applications, such as residential areas, streets, cycle paths and building surrounds. Highly durable, FleXity offers an extra-long 100 000-hour (B10L80 @ Ta25°C) maintenance-free lifetime with surge protection up to 10KV. As well as no component maintenance, it has a round self-cleaning shape. FleXity's efficient optical system (90Llm/W), available in sizes from 1450lm to 6320lm (21W to 80W), ensures excellent energy savings. Savings are further increased with dedicated optics and integrated bi-power night-time dimming as standard, and the option of other lighting controls. To maximise performance, a choice of diffuser variants allows optimised comfort while flat glass eliminates upward light entirely (ULOR=0).

www.thornlighting.com/FLEX





5

Urba

A versatile LED urban lantern exclusively designed by world renowned architects, city planners and designers, Wilmotte & Industries.

Sophisticated by day and revealing by night, Urba conveys quality and innovation to create a unique light signature. It is available in two sizes up to 15 000 lumens. With an R-PEC optic offering nine light distribution choices, Urba provides efficient LED lighting (up to 100Lm/W) to reveal the urban landscape and fulfill EN13201 lighting classes from S5 to Me2 with no upward light (ULOR=0). Urba's elegant design with no excessive styling combined with contrasting colour tones and dichroic glass makes it sympathetic with both modern and traditional environments. With three mounting options (post top, wall and lateral bracket) and a wide choice of coordinated short and long brackets and columns, Urba is a complete and fully harmonised urban lighting solution for new and renovation, street and road projects.

www.thornlighting.com/URBA





6

Zoar





A unique LED urban architectural lantern exclusively designed by world class architect Daniel Libeskind for pedestrian areas, parks, urban streets and building surrounds.

Supplied with a modern textured black finish as standard, Zoar offers a striking slim profile and elegant column package with continuous geometries from the lantern to the column. A tiltable LED engine allows freedom and innovation in lighting design, as well as easy integration into the landscape. To ensure an efficient and comfortable light for the application, Zoar has a customisable optic with a choice of eleven light distributions and two enclosures. With a 100 000-hour lifetime for the LED and driver, Zoar is maintenance-free and delivers significant cost savings over its lifetime.

www.thornlighting.com/ZOAR

7



Chalk

A striking LED luminaire for class and conference rooms with an innovative touch button control for adaptability and excellent efficiency (92Llm/W).

Replacing the need for an obtrusive pull cord, Chalk's touch button control will enhance and personalise any space. Chalk provides a stimulating and uplifting environment through direct and indirect illumination and is also available with dedicated asymmetric distribution for specialist whiteboard illumination. Direct versions are available in 3300lm and 4100lm outputs and are suitable for surface or suspended mounting. Direct/indirect versions are available in 5100lm and 6800lm outputs and are suitable for suspended mounting only. A high quality micro-prismatic acrylic diffuser provides excellent light uniformity and glare control.

www.thornlighting.com/CHAL

8



Contour

A highly versatile and energy efficient office lighting range with a modular design that offers a comprehensive choice of installation options and lighting technologies to fit any project specification.

Contour can be surface mounted or suspended, either individually or in flexible continuous systems. A choice of efficient LED (90Llm/W) or T16 lamps (75Llm/W) with integrated controls minimise energy consumption while a wide selection of optics, size and colour options provide complete flexibility. High quality optics deliver maximum lighting comfort to meet industry standards and achieve a minimum of 30% upward light for direct/indirect versions with very easy and fast installation with all accessories. Contour is suitable for meeting and conference rooms, classrooms and reception areas.

www.thornlighting.com/CNTR

9



ForceLED

IP66-rated, ForceLED is dust and moisture proof, making it ideal for tougher applications, including indoor car parks, warehouses, dry and cold storage, production areas and workshops.

Efficient LED (40W/61W) deliver 4000 and 6000 lumens respectively while achieving up to 102Llm/W efficacy. This equals an average saving of around 40% when fitted as one for one replacement of traditional fluorescent alternatives. Further savings are achievable with the integral presence detector allowing a wireless master and slave function.

www.thornlighting.com/FORL



10



Jupiter 3

A practical choice for efficient direct/indirect lighting.

Jupiter 3's simple and lightweight design is robust for longevity and ideal for applications including education, offices and circulation areas. Jupiter 3 features a distinctive white painted steel frame and is supplied with highly efficient LED (>85lm/W) or T16 lamps (>75lm/W) with integrated control options to save energy. Choices are surface direct and suspended self-balancing direct/indirect versions with a minimum of 30% upward light. Other options include a double parabolic performance louvre optic, microprismatic diffuser or asymmetric louvre. Jupiter 3 is quick as well as easy to install and to maintain. It can be mounted individually or in continuous lines. Emergency versions are also available

www.thornlighting.com/JUP3

11



Omega LED

A versatile luminaire which offers flexible mounting options, including recessed, surface and suspended, using a simple mounting kit.

As well as through-life flexibility, Omega LED uses less energy compared to fluorescent equivalents, allowing a short payback time and substantial energy savings. With an IP44 rating, Omega LED extends beyond the traditional applications of circulation areas and general illumination to restrooms and hospitals. Omega LED is an easy retrofit solution for traditional luminaires. It offers a choice of colour temperatures (3000K and 4000K) and a high colour rendering index.

www.thornlighting.com/OMGL

12



PopPack LED

An LED extension to the popular PopPack batten range with identical fixation and connection points (BESA ready) to make it ideal for new and refurbishment projects.

With a 3000 to 6800lm output, PopPack Eco is highly efficient (>100lm/W) and reduces energy consumption by 40% compared to traditional fluorescent alternatives. A textured prismatic diffuser provides glare control and a uniform lit appearance. PopPack Eco has a 4000K colour temperature and a very high colour rendering index of more than 80. It is ideal for applications including storage areas, staircases, cellars and garages. A special anti-fly diffuser design avoids black spots caused by insect ingress throughout the product lifetime. As well as BESA mounting, through wiring is possible to substantially reduce installation costs.

www.thornlighting.com/POPR



13



Primata Pro

An efficient and low maintenance trunking luminaire with proven LED technology.

In addition to new installations, Primata Pro offers a simple refurbishment upgrade for existing T5 and T8 installations. Excellent energy efficiency of up to 136lm/W delivers energy savings of up to 50% compared to traditional fluorescent alternatives. Primata Pro is available with lumen packages ranging from 3000 to 7500lm and offers a 4000K colour temperature with a colour rendering index of 80. It is ideal for applications including industry and retail, logistics halls, warehouses and supermarkets. Primata Pro is supplied with the light source and diffuser optic combined into a single product. Installation on existing Primata II trunking is tool-free while turnbuckles ensure mechanical and electrical connection in one step.

www.thornlighting.com/PM2L

14



Primata (LED/T5)

A highly flexible modular trunking system providing easy project planning available in LED or with T5 lamps.

Primata with LED technology delivers exceptionally efficient (140lm/W) light exactly where it is needed with lumen packages from 4900 to 12900 lumens. An all in one tool-free installation solution for direct ceiling or suspended mounting, combining the track, the lighting batten and the optic in one easy-to-handle part with automated mechanical connection, allowing the rapid creation of continuous or separated light lines. Primata with T5 lamps offers a wide range of dedicated optics and housings to suit specific application needs. Primata is ideal for applications including industry and retail, logistics halls, warehouses and supermarkets, addressing all budget constraints.

www.thornlighting.com/PM5
www.thornlighting.com/PMML

15



Voyager Compact LED

A versatile, affordable and easy to maintain extension to Thorn's trusted Voyager emergency lighting range.

Ideal for new installations and direct 8W fluorescent replacements, this compact 100lm LED emergency bulkhead is 62% more efficient than fluorescent alternatives, using just 3W when in maintained mode. Voyager Compact LED is sealed to IP65 and suitable for outdoor and indoor applications. Its robust dust-tight and jet waterproof design ensures suitability for all escape routes and anti-panic open areas. Fast and simple to install, Voyager Compact LED benefits from maintained and non-maintained operation within the same luminaire and can be installed in one piece with no mounting kit. Conical and side optical prisms maximise performance and spacing. Legend kit is to be ordered separately in optional ISO or EN formats.

www.thornlighting.com/VOYC



Sensalite

A first step to comfort and energy saving making luminaires intelligent.

Sensalite features Thorn luminaires with sensors, offering presence detection, daylight linking and optional infra-red control. Sensalite sensors can be used for small office applications, classrooms, warehouses and corridors amongst others. With Sensalite sensors the right light level is provided automatically at the right place, making it the perfect tool to provide efficient lighting. The sensors are plug and play, easy to install and no maintenance is required. The range consists of PIR and microwave sensors, available in switching or dimming versions. The sensors can be ceiling or surface mounted and versions for batten luminaires are offered as well. Optional IR remote programmers are also available.

www.thornlighting.com/SENL

17



Satin 2 Recessed

A discreet linear floodlight range offering extensive static and dynamic illumination choice to enable architects and designers to creatively bring façades and building surrounds to life.

Satin 2 Recessed's four light distributions include circular intensive (12°) and extensive (32°), elliptical (12x44°) and asymmetrical. Standard LED colours include static 3000K, 4000K, red, blue, green and dynamic RGBW. 6000K, amber and variable white versions are also available on request. Satin 2 Recessed has a medium profile with a choice of four lengths (354, 654, 954 and 1254mm). Side by side installation allows a uniform light beam where required. Satin 2 Recessed is suitable for ground recessed installation with integral driver for monochromatic versions and remote driver/DMX system for dynamic versions as standard. High temperature versions for hot climates (50°C) with a remote gear box are available.

www.thornlighting.com/SATL

18



Sunnapak

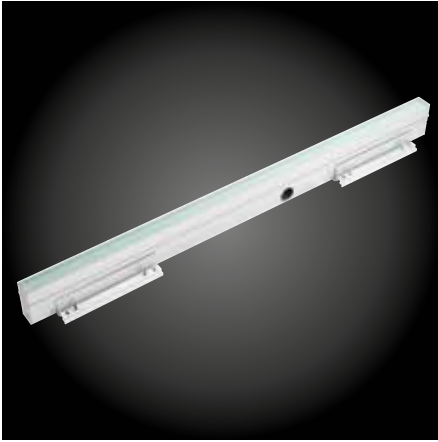
The Sunnapak solar system provides reliable, excellent quality lighting with no black outs in countries with temperatures up to 70°C.

An advanced energy management system manages and monitors energy consumption to maximise battery life. This includes varying light intensity according to the time and battery charge, and the use of a motion sensor.

Sunnapak is designed for a wide range of outdoor applications including roads up to Me3, streets up to S4, cycle paths, car parks, bus stops and industrial areas. Supplied as a complete package, it is compatible with all Thorn LED street lanterns with a power consumption of up to 100W. It is available as standard with Isaro and R2L2, it is available on request with other Thorn lanterns.

www.thornlighting.com/SUPK

19



Urbastil

A soft linear outdoor/indoor LED floodlight for decorative architectural light effects.

Urbastil is a creative addition to Thorn's outdoor range. Benefiting from a small width profile for aesthetical integration in wall or in ground, Urbastil offers very uniform light rendering thanks to a thick frosted glass enclosure. A closed ground recessed box allows quick installation and easy peel off after installation. Installation accessories supplied with the product allow for precise installation and the creation of straight lines using luminaire lengths of either 0,5m or 1m. Urbastil is available in a choice of colour temperatures (3000K and 4000K).

www.thornlighting.com/URBS

20



Vioo

An invisible performance LED floodlight for outdoor/indoor window surround illumination.

Vioo is a creative addition to Thorn's outdoor range, providing a precise ellipsoidal light beam for focused illumination. Vioo is rectangular and discreet with no visible screws thanks to a clip locking mechanism. It also has small dimensions to be invisible when installed on window surrounds. With accurate adjustments inside the fixing plate, Vioo adapts to all window types and windowsill inclinations. It is available in a dark grey or silver grey body colour and a choice of two colour temperatures (3000K and 4000K). Marine environment resistance is provided as standard.

www.thornlighting.com/VIOO

21



Club LED

A trusted indoor bulkhead upgraded with efficient LED (78Llm/W) and higher lumen outputs (1000lm).

Club LED has a load of just 13W and is ideal for one for one replacement of traditional 28W 2D bulkheads. It offers a comparative energy saving of 63% and an integrated LED and driver platform to reduce shadowing and improve light uniformity. Dust and splash proof, Club LED is sealed to IP54 and impact resistant to IK08. With a choice of warm white (3000K) or neutral white light (4000K), it is suitable for wall or ceiling mounting and offers sensor options for optimum energy efficiency. A long 50 000-hour lifetime provides the equivalent of 13 maintenance-free years with a daily 10-hour operation. An integral 3-hour emergency operation eliminates the need for separate emergency lighting. Chrome version also available.

www.thornlighting.com/CLUB

22



HiPak Pro LED

An LED high bay luminaire to reduce energy consumption and maintenance costs.

HiPak Pro LED is up to 45% more efficient than traditional HID sources. Dedicated individual LED optics provide precise light control for high level mounting applications, including racking and open areas in industrial, warehousing, logistic and exhibition centres. The two different light distributions allow versatile use in a great variety of projects. Its innovative body design ensures optimal thermal management and long LED life up to 50 000 hours. HiPak Pro LED is DALI dimmable or available with an integral passive infrared (PIR) sensor to maximise energy savings. Now also available with high frequency ballast the efficiency of the luminaire is further increased.

www.thornlighting.com/HIPP

23



Leopard LED

A trusted outdoor and indoor bulkhead range upgraded with efficient LED (90Llm/W).

The range includes a 1900lm option for direct replacement of 38W 2D bulkheads and a 1200lm option for direct replacement of 28W 2D bulkheads. Leopard LED with 1900lm has a load of just 21W and offers a 63% energy saving compared to traditional 38W 2D bulkheads. Dust tight and jet water proof, it is sealed to IP65 and has an impact resistance rating of IK10. With a neutral white light (4000K), Leopard LED is suitable for wall or ceiling mounting and includes sensor options for optimum energy efficiency. A long 50 000-hour lifetime provides the equivalent of 13 maintenance-free years with a daily 10-hour operation. An integral 3-hour emergency operation eliminates the need for separate emergency lighting.

www.thornlighting.com/LPRD

24



Pallion LED

A minimalist range of shallow recessed direct/indirect luminaires upgraded with the latest LED technology.

Pallion now benefits from even greater efficiency (82lm/W) as well as high uniformity and good wall/ceiling luminance (3200lm) to offer exceptional performance and value for money. Pallion complies with all lighting norms, including EN12464, and helps towards achieving standards such as BREEAM and LEED. By combining sophisticated optical performance with the simplicity of an open coffer, Pallion offers a sleek, minimalist and modern design which delivers maximum light impact using less energy. With a unified glare rating (UGR) of < 19 and an excellent colour stability Pallion provides high performance task and ambient lighting for a range of indoor applications.

www.thornlighting.com/PALL

25



Tidon LED

An indoor luminaire of modular design in three configurations: single, twin or triple for wall or ceiling mounting.

The lighting heads can be pivoted up to 30-degrees from the vertical and there is a choice of distributions, from narrow spot to wide flood. Tidon LED has now been upgraded with the latest state of the art LED technology providing greater efficiency (up to 80lm/W) while at the same time consuming 30% less energy. Available in two colour temperatures (3000K and 4000K), it has a rated life of 50 000 hours and is dimmable. Application possibilities are office and display schemes as well as hotels. Easy-to-fit installation and adaptation are further advantages of Tidon. For special tasks in offices or for retail lighting Tidon lighting frames can be supplied with an almost limitless number of different configurations.

www.thornlighting.com/TIDN

26



GTLED RS

An extension to the existing GTLED tunnel luminaire range, GTLED RS offers a stainless steel alternative to the standard aluminium housing for supreme corrosion resistance.

GTLED RS offers all the benefits of GTLED, including energy savings, outstanding lighting comfort and through wiring capability to substantially reduce installation costs. With no cooling fins, it has an easy to clean, functional design. GTLED RS features advanced R-PEC optics to achieve a perfect tunnel specific light distribution with high road luminance and low glare ($Tl < 6$). A 100 000-hour lifetime ensures the lowest possible maintenance costs while an IP66 rating and IK08 glass enclosure ensure durability and maintained performance over time. GTLED RS has a system power up to 130W for 1 to 6 cd/m^2 road luminance levels.

www.thornlighting.com/GTLD

27



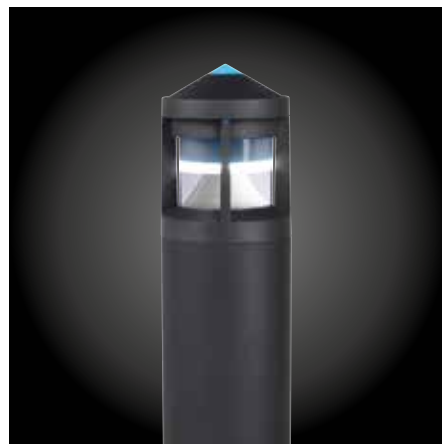
Jalon LED

A rectangular vertical or horizontal wall recessed luminaire for visual guidance now available in LED.

Jalon LED is a high performance LED luminaire with small dimensions (71x108mm), wide asymmetrical light beams and performance lumen output (96lm). The luminaire can be used for indoor as well as outdoor applications such as stairways, building surrounds and pathways. There is a choice of vertical and horizontal versions as well as two colour temperatures (3000K and 4000K). Jalon LED is available complete with integral driver, LED light source and recessed box which can be used for the vertical and horizontal version. Polystyrene protection is also included to close the housing opening during installation. The recessed box can be ordered separately.

www.thornlighting.com/JALL

28



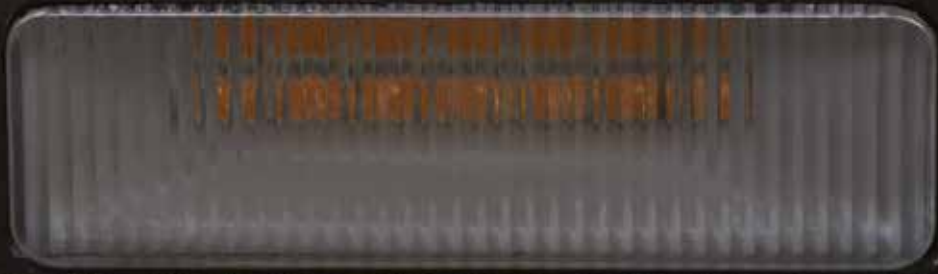
Promenade LED

Illuminated bollard enabling exterior lighting to become an intrinsic part of the total design, concept now updated with the latest LED technology.

Whether for pathways, entrances or building surrounds the emphasis is on delivering efficient and comfortable LED illumination with a touch of colour and style. Promenade LED is unique, its cylindrical optic is cleverly designed to redirect light from high powered white LED towards the ground, while additional LED allow either the optic or just the top cone to be lit in colour. The solid aluminium casting and tough polycarbonate diffuser, complete with anti-glare band, offer excellent vandal resistance. Sealed to IP65, the optic will stay clean, therefore maintaining its looks and performance.

www.thornlighting.com/PMLD

THORN



THORN

LIGHTING PEOPLE

Thorn Lighting Main Offices

Australia

Thorn Lighting Pty Limited
43 Newton Road, Wetherill Park, NSW 2164
Tel: (02) 8786 6000
Fax: (02) 9612 2700
infoaustralia@zumtobelgroup.com
www.thornlighting.com.au

Austria

ZG Lighting Austria GmbH
Beratungszentrum Wien,
Niederösterreich, Burgenland,
Danau-City-Strasse 1, 1220 Wien
Tel: (33) 1 258 26 01-0
Fax: (43) 1 258 26 01-82845
welcome@zumtobel.at
www.thornlighting.at

Benelux

ZG Lighting Benelux
Rijksweg 47 A
Industriezone Puurs Nr. 442
BE-2870 Puurs, Belgium
Tel: (32) 3 860 16 60
Fax: (32) 3 860 16 69
infobe@zumtobelgroup.com
www.thornlighting.be

Central Asia, Africa, Turkey

Thorn Europhone S.A
156 Boulevard Haussmann
75379 Paris Cedex 08, France
Tel: (33) 1 49 53 62 62
Fax: (33) 1 49 53 62 40
info.paris@zumtobelgroup.com
www.thornlighting.fr

China

Thorn Lighting (Guangzhou) Limited
No.12 Lianyuan Road, Eastern Section, GETDO
Guangzhou 510530 P.R. China
Tel: (86) 20 2232 6000
Fax: (86) 20 3228 1777
cn.sales@zumtobelgroup.com

Croatia

ZG Lighting d.o.o.
Radnička cesta 80
HR - 10000 Zagreb, Croatia
Tel: (385) 1 640 40 80
welcome@zumtobel.hr
www.thornlighting.com.hr

Cyprus, Greece, Malta and Portugal

ZG Lighting Southern Europe and Latam, S.L.
C/ Inocencio Fernández, 81
28035 Madrid (Spain)
Tel: (34) 91 659 30 76
info.med@zumtobelgroup.com
www.thornlighting.com

Czech Republic

ZG Lighting Czech Republic s.r.o.,
Jankovcova 2, 170 00 Praha 7
Tel: (420) 266 782 200
Fax: (420) 266 782 201
thorn.cz@zumtobelgroup.com
www.thornlighting.cz

Denmark

Thorn Lighting A/S
Stamholmen 155, 5. sal, 2650 Hvidovre,
Tel: (45) 76 96 36 00
Fax: (45) 76 96 36 01
thorninfo.dk@zumtobelgroup.com
www.thornlighting.dk

France

Thorn Europhone SA
156 Boulevard Haussmann,
75379 Paris Cedex 08, France
Tel: (33) 1 49 53 6262
thorn.promotion@zumtobelgroup.com
www.thornlighting.fr

Germany

ZG Licht Nordwest GmbH
Beratungszentrum Hamburg (Zentrale)
Stahlvierte 20
22761 Hamburg
Tel: (49) 40 53 53 81-0
Fax: (49) 40 53 53 81-99
hamburg@zumtobelgroup.com
www.thornlighting.de

Hong Kong, Taiwan

Thorn Lighting (Hong Kong) Limited
Unit 503-508, 5/F, Building 16W, Phase 3,
Hong Kong Science Park, N.T., Hong Kong
Tel: (852) 2578 4303
Fax: (852) 2887 0247
info.hk@zumtobelgroup.com
www.thornlighting.hk
www.thornlighting.tw

India

Thorn Lighting India Pvt. Ltd.
Unit No. 404, Western Edge-1
4th Floor, Located at CTS 163A/165
Western Express Highway, Borivali (E)
400 066, Mumbai, India
Tel: (91) 22 4048 1900
Fax: (91) 22 4048 1900
international_sales@zumtobel.com
www.thornlighting.in

Ireland

Thorn Lighting (Ireland) Limited
Century House, Harolds Cross Road,
Dublin 6W
Tel: (353) 1 4922 877
Fax: (353) 1 4922 724
dublinsales@zumtobelgroup.com
www.thornlighting.co.uk

Italy

ZG Lighting Srl socio unico
Via G Di Vittorio, 2, Cadrano di Granarola,
Bologna 40057, Italy
Tel: (39) 051 763391
Fax: (39) 051 763088
thorn.it@zumtobelgroup.com
www.thornlighting.it

Kingdom of Saudi Arabia

Thorn Lighting
Jeddah 21411, Medina Road,
Sulaiman Building, P.O.Box 222
Tel: (966) 2 653 3077
Fax: (966) 2 653 3153
marketing.mena@zumtobelgroup.com
www.thornlighting.ae

Korea

1506, Union Centre BLDG,
837-11, Yeoksam-dong, Kangnam-gu, Seoul
Tel: (82) 2 565 8823~4
Fax: (82) 2 565 8827
info.kr@zumtobelgroup.com
www.thornlighting.kr

Latin America

ZG Lighting Southern Europe and Latam, S.L.
Calle Orinoco 90, planta 21, Of. 03
Las Condes, Santiago de Chile (Chile)
Tel: (56) 22 573 77 80
info.latam@zumtobelgroup.com
www.thornlighting.es
www.thornlighting.com

Middle East - Bahrain, Kuwait, Jordan,

Palestine, Lebanon, Iran, Yemen
Thorn Lighting Ltd.
Al Sheela Building, Office 301,
Block E, Airport Road, P.O.Box 22672,
Deira, Dubai, UAE
Tel: (971) 4 294 0181
Fax: (971) 4 294 8838
bobby.sudhir@zumtobelgroup.com
www.thornlighting.ae

Netherlands

ZG Lighting Benelux
Zinkstraat 24-26
4823 AD Breda
Netherlands
Tel: (31) 76 541 76 64
Fax: (31) 76 541 54 98
info@zumtobel.nl
www.thornlighting.nl

New Zealand

Thorn Lighting (NZ) Ltd
399 Rosebank Road, Avondale,
Auckland 1026, PO Box 71134, Rosebank,
Auckland 1348
Tel: (64) 9 828 7155
Fax: (64) 9 828 7591
NZakth.info@zumtobelgroup.com
www.thornlighting.co.nz

Norway

Thorn Lighting AS
Strømsveien 344, 1081 Oslo
Tel: (47) 22 82 07 00
info.no@zumtobelgroup.com
www.thornlighting.no

Oman

Thorn Lighting c/o Delta Co. Ltd. LLC.
P.O.Box: 1537; Postal Code 112 RUWI
Tel: (968) 2470 8483
Fax: (968) 2470 8502
bobby.sudhir@zumtobelgroup.com
www.thornlighting.ae

Poland

ZG Lighting Polska Sp. z o.o.
Ul. Wotoska 9A
02-583 Warszawa
Polska
Tel: (48) 22 856 74 31
zgpolska@zumtobelgroup.com
www.thornlighting.pl

Qatar

Thorn Lighting c/o Arabian Link Trading
Cleopatra Building, Office No. 8, First Floor
P.O.Box 6026, Doha, State of Qatar
Tel: (974) 4432 1445
Fax: (974) 4432 1445
dakhata.sathy@zumtobelgroup.com
www.thornlighting.ae

Romania

Zumtobel Lighting Romania SRL
Str. Radu Greceanu 2, Sector 1
RO-012225, Bucuresti, Romania
Tel: (40) 31225 38 01
ro.welcome@zumtobelgroup.com
www.thornlighting.com

Russia

Thorn Lighting
Skakovaya str., h. 17, bl. 2, office 2110
125040, Moscow
Tel: (7) 495 981 35 41
Fax: (7) 495 981 35 42
office.moscow@zumtobelgroup.com
www.thornlighting.ru

Serbia

ZG Lighting d.o.o.
Beton hala - Karadordeva 2-4
11000 Beograd
Serbia
Tel: (381) 69 5444802
welcome.rs@zumtobel.com
www.thornlighting.com

Singapore

Thorn Lighting (Singapore) Pte Ltd
5 Kaki Bukit Crescent, 04-02 Kayotech
Building, 416238 Singapore
Tel: (65) 6844 5800
Fax: (65) 6745 7707
info.sg@zumtobelgroup.com

Slovenia

ZG Lighting d.o.o.
Štukljeva cesta 46, 1000 Ljubljana
Tel: (386) 1 56 09 820
welcome.si@zumtobel.com
www.thornlighting.com

South + East Africa

Thorn Lighting Ltd
Durhamgate, Spennymoor,
County Durham, DL16 6HL
Main Switchboard
United Kingdom
Tel: (44) 1388 42 00 42
www.thornlighting.co.uk

Spain

ZG Lighting Southern Europe and Latam, S.L.
C/ Inocencio Fernández, 81
28035 Madrid (Spain)
Tel: (34) 91 659 30 76
info.spain@zumtobelgroup.com
www.thornlighting.es

Sweden

Thorn Lighting AB
Industrigatan, Box 305, SE-261 23
Landskrona
Tel: (46) 418 520 00
Fax: (46) 418 265 74
thorninfo.se@zumtobelgroup.com
www.thornlighting.se

Switzerland

Zumtobel Licht AG
Thurgauerstrasse 39, 8050 Zürich
Tel: (41) 44 305 35 35
Fax: (41) 44 305 35 36
info@thornlighting.ch
www.thornlighting.ch

United Arab Emirates - Abu Dhabi

Thorn Gulf LLC
Obeid Khaleefa Al Jaber Building
Office No. 01, Floor '0' (zero)
Behind National Bank of Abu Dhabi,
Tel: (971) 2 634 4144
Fax: (971) 2 634 4116
salesthorn@zumtobelgroup.com
www.thornlighting.ae

United Arab Emirates - Dubai

Thorn Gulf LLC
Al Shoala Building, Office 301,
Block E, Airport road, P.O. Box 22672,
Deira, Dubai, UAE
Tel: (971) 4 294 8938
Fax: (971) 4 294 8838
salesthorn@zumtobelgroup.com
www.thornlighting.ae

United Kingdom

Thorn Lighting Ltd
Durhamgate, Spennymoor,
County Durham, DL16 6HL
Tel: (44) 1388 42 00 42
Fax: (44) 1388 42 01 56
brochures.uk@zumtobelgroup.com
www.thornlighting.co.uk

www.thornlighting.com



5 Year Warranty

As a globally leading luminaire manufacturer, Thorn Lighting provides a five-year warranty for its complete product range within all European Countries. Effective from 1st May 2015.

Thorn Lighting is constantly developing and improving its products. All descriptions, illustrations, drawings and specifications in this publication present only general particulars and shall not form part of any contract. The right is reserved to change specifications without prior notification or public announcement. All goods supplied by the company are supplied subject to the company's General Conditions of Sale, a copy of which is available on request. All measurements are in millimetres and weights in kilograms unless otherwise stated. Printed on Luxo Light.

Publication No: PROD_FOCUS (INT) Publication Date: 03/15



www.pefc.org